

Fire stop intumescent pipe wrap

INTUMESCENT WRAP B300

FOR UPVC, PVC, ABS, PP, PE & COMPOSITE PIPE PENETRATIONS

Nullifire B300 is a simple to use, self adhesive intumescent pipe wrap. The B300 fits around the circumference of the pipe within the depth of the substrate. In the event of a fire, B300 prevents the passage of fire and smoke by closing off the aperture within the compartment floor or wall when penetrated by plastic pipes.

Key features

- Up to 2 hours fire resistance
- Ready to use and easy to install
- Water resistant
- High performance expansion rate
- Flexible and easy to fasten in place
- No mechanical fixing required
- One wrap can be used for certain applications*
- Can be utilised internally with Nullifire B747-50 Coated Board System
- Easy to reinstate any remaining gaps with M701 Acrylic, B220 Structural Compound or B270 High Strength Structural Grade Compound.

*See testing matrix for scope of application

Product overview

Typical applications

- Health and leisure centres
- Schools, universities and other educational buildings
- Hospitals
- Industrial, power generation plants

Joint substrates

- Masonry walls
- Masonry floors

Permissible services

- PVC pipes
- UPVC pipes
- ABS pipes
- PE pipes
- PP pipes
- Composite pipes

Testing and certification

Fire performance

- Tested in accordance with EN 1366-3
- Up to 4 hours fire resistance
- Classification EN 13501

Technical support

Please refer to our MSDS and technical application data sheets for further details. For guidance on applications outside this scope, contact our technical department.



Specification

| | |
|-------------|---|
| B300 | Flexible intumescent graphite strip encased within polythene sleeve |
|-------------|---|

Sizes 55mm – 160mm. For sizes in excess of 160mm. Contact Nullifire for details.

| Pipe size (mm) | Wrap width (mm) | Wrap length (mm) | Wrap Thickness (mm) |
|----------------|-----------------|------------------|---------------------|
| 55 | 60 | 183 | 3.5 |
| 82 | 60 | 274 | 3.5 |
| 110 | 60 | 368 | 6 |
| 160 | 60 | 559 | 9.5 |

Installation guidance

Preparation

Ensure face of wall/floor adjacent to the pipe is smooth and free from debris.

Installation

1. Push Wrap into position
2. Seal in place utilising suitable material, M701 Acrylic, B220 or B270 Structural Compound

Maintenance

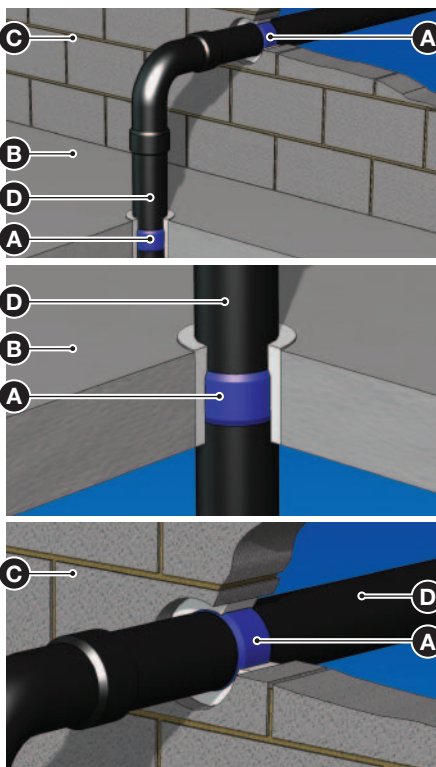
No maintenance required after installation. Routine inspection recommended to ensure no damage.

Tools required

Suitable material to seal annular space, M701 Acrylic, B220 Structural Compound or B270 High Strength Structural Compound.

Application types

Horizontal/vertical penetrations



- A** B300 Pipe Wrap
- B** Floor slab
- C** Masonry wall
- D** Plastic pipe

Fire performance

| Pipe material | Pipe diameter (mm) | Integrity (mins) | Insulation (mins) |
|--|--------------------|------------------|-------------------|
| Masonry wall (One Wrap Central) | | | |
| PVC | up to 160 | 120 | 120 |
| PP | up to 55 | 60 | 30 |
| | 55-160 | 120 | 120 |
| PE | up to 55 | 120 | 120 |
| Composite Aluplex | up to 55 | 120 | 120 |
| | 55-160 | 60 | 60 |
| ABS | up to 160 | 120 | 120 |
| Masonry floor (One Wrap) | | | |
| PVC/UPVC | up to 160 | 120 | 120 |
| PP | up to 160 | 120 | 120 |
| PE | up to 56 | 120 | 120 |
| Composite ABS/ASA/PVC | up to 52 | 120 | 120 |
| | 52-160 | 60 | 60 |
| PVC duct | 110 x 54 | 120 | 120 |
| | 310 x 28 | 120 | 120 |
| | 180 x 95 | 120 | 120 |
| Masonry wall (Two Wraps one either side flush with substrate) | | | |
| PVC | up to 160 | 120 | 120 |
| PP | up to 110 | 120 | 120 |
| | 110-160 | 120 | 60 |
| PE | up to 110 | 120 | 120 |
| | 110-160 | 60 | 60 |
| Composite Aluplex | 40 | 120 | 120 |
| | 75 | 120 | 60 |
| ABS | up to 160 | 120 | 120 |

Product range

| Product | Description | Diameter (mm) | Box Qty. | Item No. |
|---------|----------------------------|---------------|----------|----------|
| B300 | Fire Stop Intumescent Wrap | 55mm | 20 | 351042 |
| B300 | Fire Stop Intumescent Wrap | 80mm | 20 | 351045 |
| B300 | Fire Stop Intumescent Wrap | 110mm | 20 | 351046 |
| B300 | Fire Stop Intumescent Wrap | 160mm | 20 | 351048 |

Associated products

| Product | Description | Page No. |
|---------|---|----------|
| M701 | Acrylic Sealant (310ml) White | 28 |
| M701 | Acrylic Sealant (600ml) White | 28 |
| B220 | Structural Grade Compound | 22 |
| B270 | High Strength Structural Grade Compound | 24 |